



FlyPresenter-CF

Quick User's Guide

ver.1 Oct,2002

Animation Technologies Inc.

www.lifeview.com.tw

Contents

Introduction	2
Features	2
System Requirement	2
FlyPresenter Suite	2
Installing Driver Software	3
Connecting the FlyPresenter-CF card	3
Cable Connection	3
Remote Controller	4
Checking the Hardware	4
Checking the Output Features	4
Checking the Remote Features :	5
How to Output Slideshow	6
Making Presentations.....	6
Making Image Slideshow	6
Using the Remote Control	6
Technical Support	6

Introduction

FlyPresenter-CF is a CompactFlash™ VGA/Video card to project the contents of your Pocket PC's LCD screen onto an external projector, monitor, or television . No need of heavy Notebook PC at all , FlyPresenter-CF enables Microsoft® PowerPoint file conversion to transform your Pocket PC into a large-audience presentation toolkit as well .

Features

- VGA output : up to 1024x768 , 64k colors.
- Video output : Composite video , S-Video , supports NTSC and PAL.
- Pen-sized infrared remote controller / pointer
- Converts the Microsoft® Powerpoint file onto Pocket PC .
- Project out the presentation or slideshow from Pocket PC to a larger screen.

System Requirement

Supported PDA

- PDA with CompactFlash™ slot.
- CPU : Intel® StrongARM, Xscale , MIPS or SH3.
- OS : Microsoft® Pocket PC or Pocket PC 2002.
- Storage Memory: minimum 4.0 MB in your Pocket PC is required for installation.

Desktop PC

- Windows 98, 98 SE, ME, NT, 2000, and XP.
- ActiveSync 3.5 or above , to install desired driver software .

FlyPresenter Suite

IA Presenter (FP)	Converts the Windows Powerpoint files on PC and projects out from Pocket PC .
IA Album (FP)	Projects the bmp. jpg , gif files from Pocket PC .
IA ScreenMirror(FP)	Projects the contents of your Pocket PC's screen onto an external display .

Installing Driver Software

1. Establish a connection between the PDA and your desktop PC (using USB cradle or IrDA , and ActiveSync).
2. Insert the CD into your computer's CD-ROM drive. Follow the pop-up instructions to complete installing the driver and desired software.

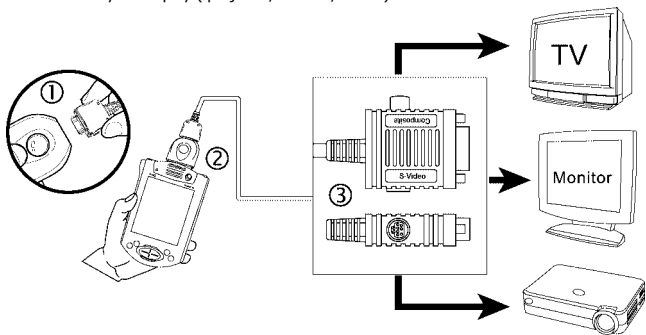
NOTE:

- The Installation for **FlyPresenter Suite** requires the **CD Key**, that is labeled on the envelope of CD_ROM
- The latest driver and software in the package are only for Microsoft® Pocket PC, they can be free updated from www.lifeview.com.tw .

Connecting the FlyPresenter-CF card

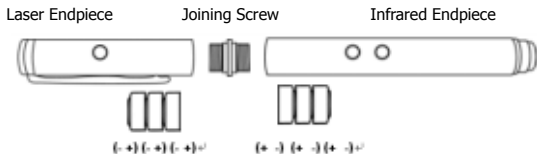
Cable Connection

1. Plug in the cable shown as below.
2. Insert the card onto the CF slot of your Pocket PC.
3. Connect the cable to your display (projector, monitor, or TV)



Remote Controller

1. Unscrew the pen-sized remote control / pointer into 3 parts as below.
2. Make sure that **ALL 6 batteries** provided were properly inserted.



NOTE: If the batteries were not installed properly according to the correct electrode (+ and -) , it will drain the power extremely and may damage the remote unit .


NOTE: The batteries might be low or have insufficient charge. Please purchase a replacement set as spec. LR41 , 1.5V Button Cell .

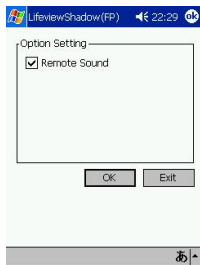
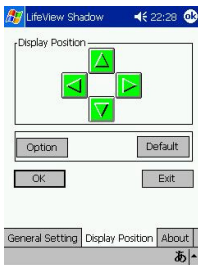
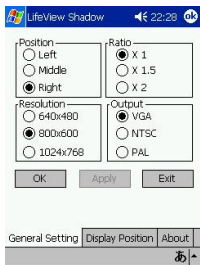
Checking the Hardware

Ensure the display device is properly connected , please run the **LifeView Shadow** to test your FlyPresenter-CF in advance before you start any other programs. LifeView Shadow is a simple testing program to configure your hardware . **It will not work while IA Style software is running !**

Checking the Output Features

1. From the **Start** button , use the stylus to highlight Programs from the drop-down menu . Tap on the

LifeView Shadow icon  , the monitor (or projector) will display the PDA's screen .



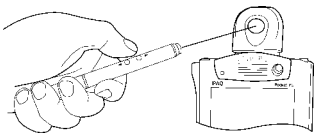
2. Select the **resolution** to check the display on your display device .
3. Tap on the **Display Position** to configure the position of output on your display device . The configuration will be saved after you exit the program.

NOTE: If the connected display is TV, whatever the cable is S-Video or Composite video , please select NTSC (for example, USA) or PAL (for most of European countries) . The **S-Video** is recommended for the better quality of display on TV .

Checking the Remote Features :

4. Aim the infrared end towards the FlyPresenter-CF , then press either the page Up or Page Down buttons . If you can hear the remote sound , the remote control works functionally .

NOTE: The default of remote sound is **ON** . Please make sure the sound of your Pocket PC is ON .



5. Tap on the **Exit** to exit the program .

How to Output Slideshow

Making Presentations

1. Converting the Windows Powerpoint file by "**IA Presenter converter**" on desktop computer.
2. Copy the iap file onto your Pocket PC. (or other available storage card)
3. Run **IA Presenter(FP)** on Pocket PC , tap on **Option > VGA** select the proper display device.
4. Select the file, click **Option > View > VGA Slideshow** .
5. If you want to exit the program, please click **tool > exit** .

Please refer to the user guide of IA Presenter or the on-line help to know more features.

Making Image Slideshow

1. Run **IA Album(FP)** on Pocket PC , tap on **Option > VGA** to select the proper display device.
2. Select the image file , Click **view > mode > VGA slideshow** .
3. If you want to exit the program, please click **tool > exit** .

Please refer to the user guide of IA Album or the on-line help to know more features.

Using the Remote Control

The remote control features work only with **IA Presenter(FP)** and **IA Album(FP)** in **VGA slideshow mode** . The function of the buttons on the remote control : Page Up → advances to next slide / image .
Page Down → returns to previous slide / image .

NOTE: LifeView Shadow, IA Presenter, IA Album, IA ScreenMirror **CANNOT** be running at the same time.

Technical Support

- If you have problem with FlyPresenter-CF, please check the FAQ page on LifeView web site www.lifeview.com.tw in advance , and send the e-mail to support@lifeview.com.tw .
- If you have problem with IA Style software , please send e-mail to supportE@iastyle.com .