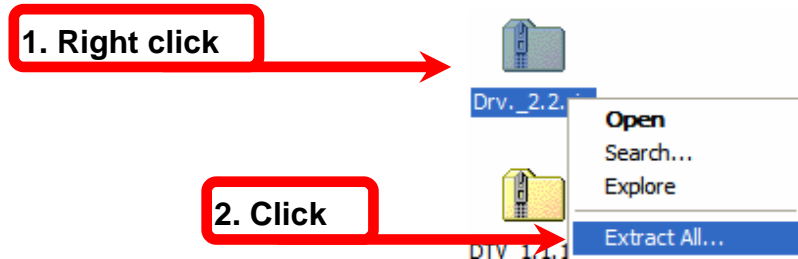


Updating Drivers

I. Downloading drivers

1. You can download new versions of our driver from our website at www.lifeview.com. After downloading these files, you need to unzip them into a folder. In Windows XP, right-click on the downloaded file and select **Extract All...**



2. The Extraction Wizard window will open. Here, continue clicking **Next** to extract the files into a folder.

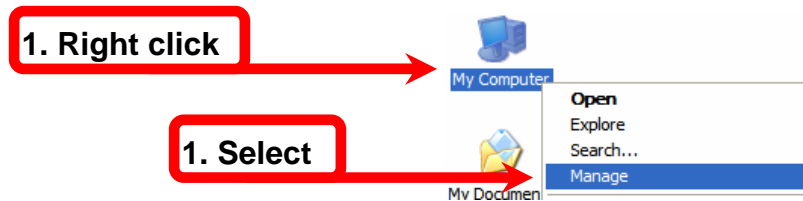


Note: For other Windows systems (like 98SE/ME/2000), you may need an unzipping utility. You can find one from www.winzip.com or www.altools.net.

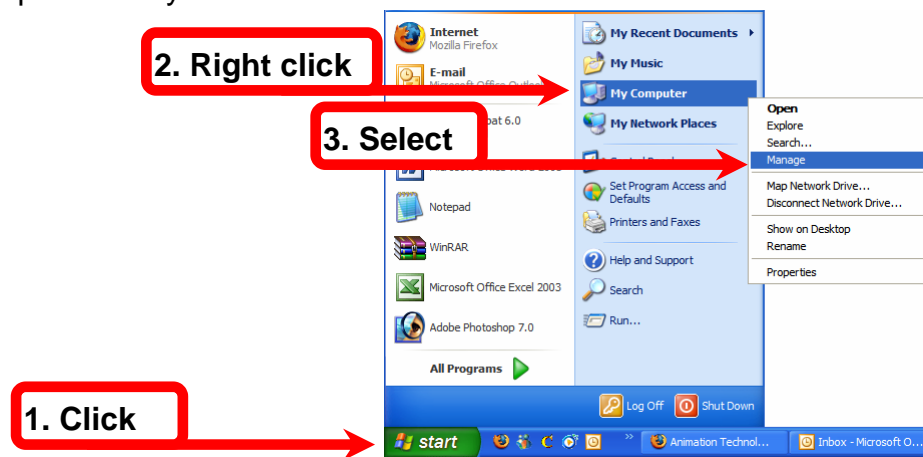
II. Updating drivers

1. To update drivers, right click on **My Computer** and select **Manage**.

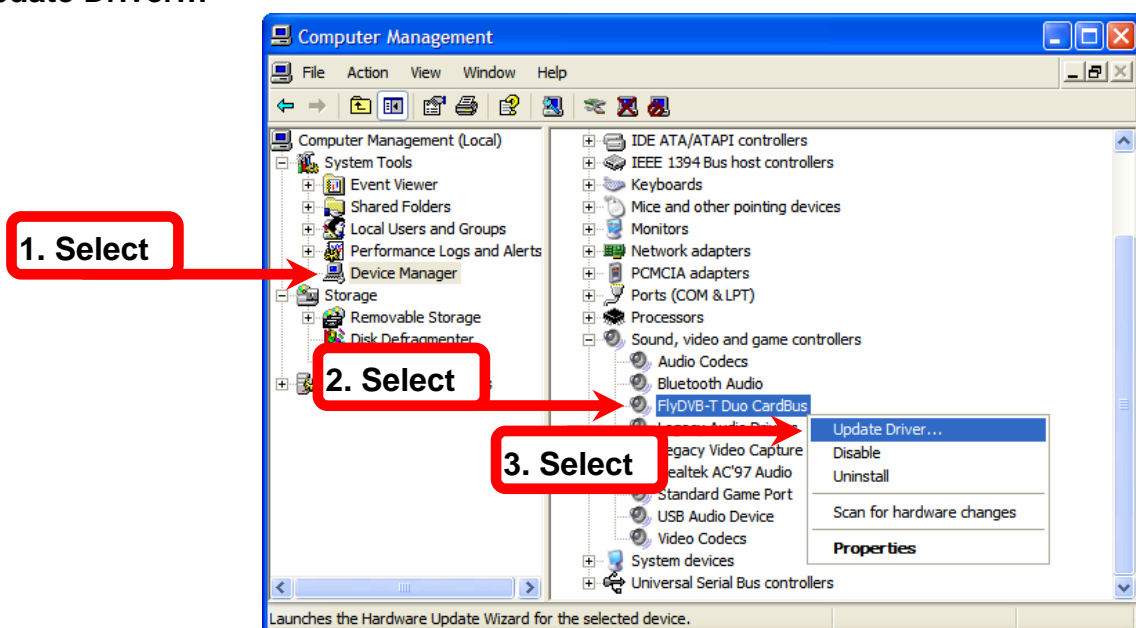
A. If My Computer is on your desktop:



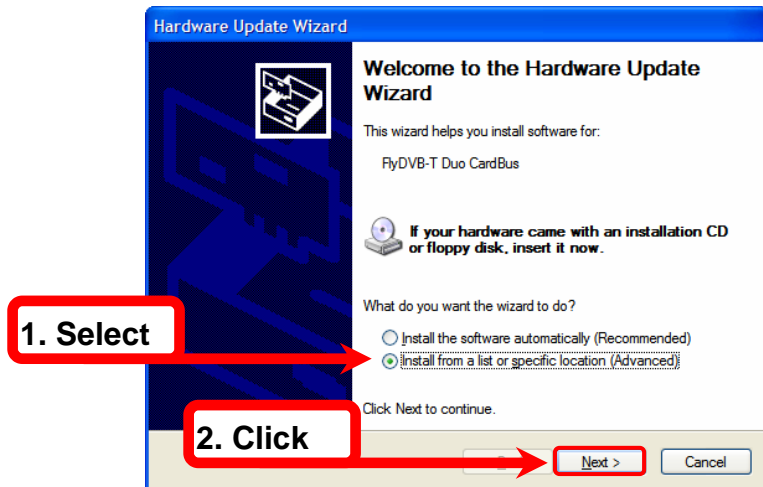
B. If My Computer is in your Start Menu:



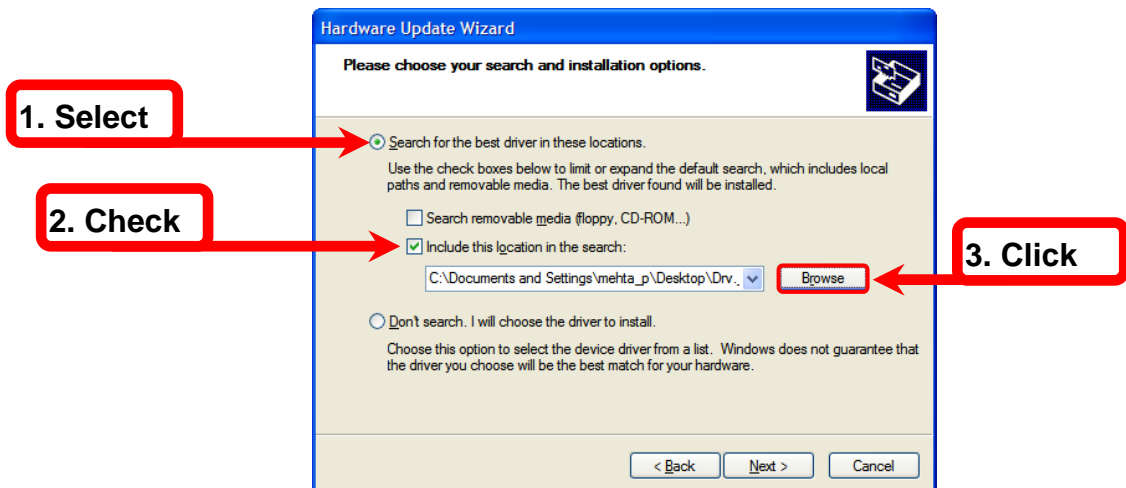
2. The Computer Management window will appear. Select **Device Manager** from the left side, then open **Sound, video and game controllers** and right-click on the name of your TV card. [This example uses the FlyDVB-T Duo CardBus] Click on **Update Driver...**



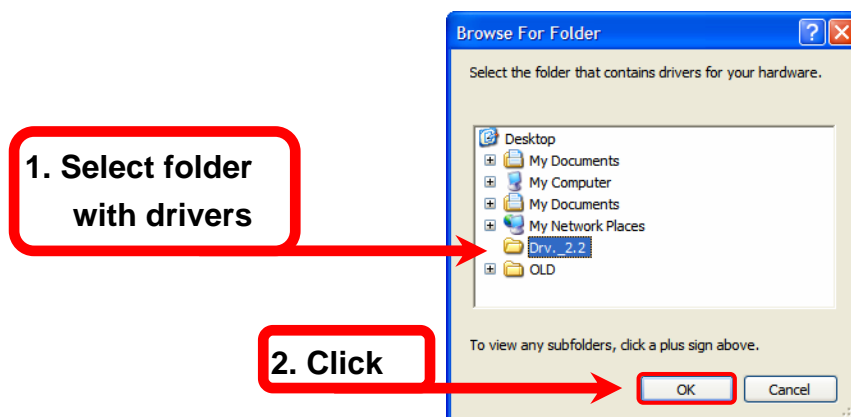
3. The **Hardware Update Wizard** window will appear. Make sure **Install from a list or specific location (Advanced)** is selected, then click **Next**.



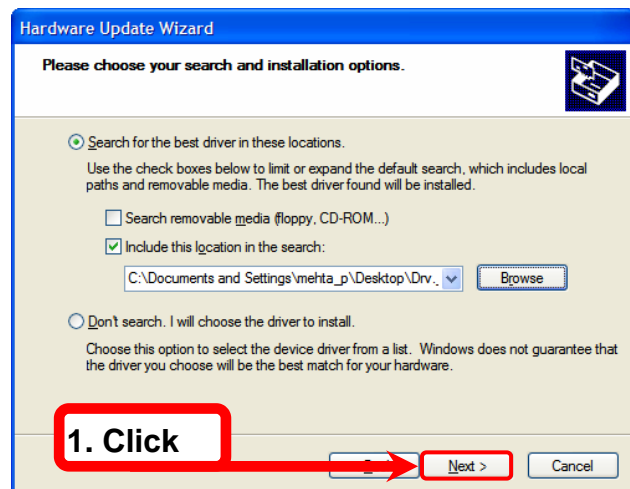
4. Select **Search for the best driver in these locations**, check **Include this location in the search**, and click on the **Browse** button.



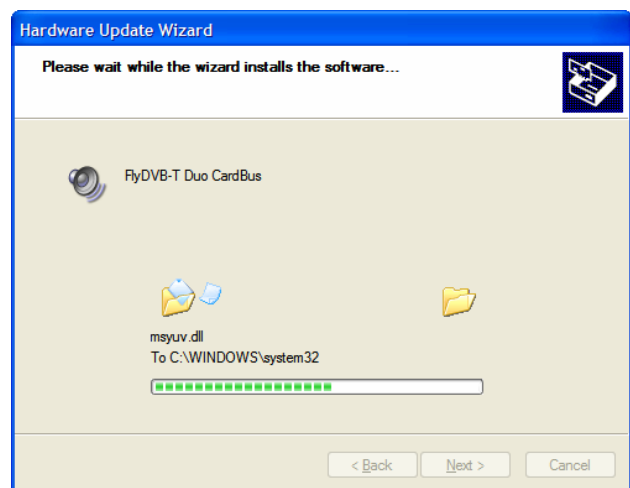
5. Select the folder where the extracted drivers are located, then click **OK**.



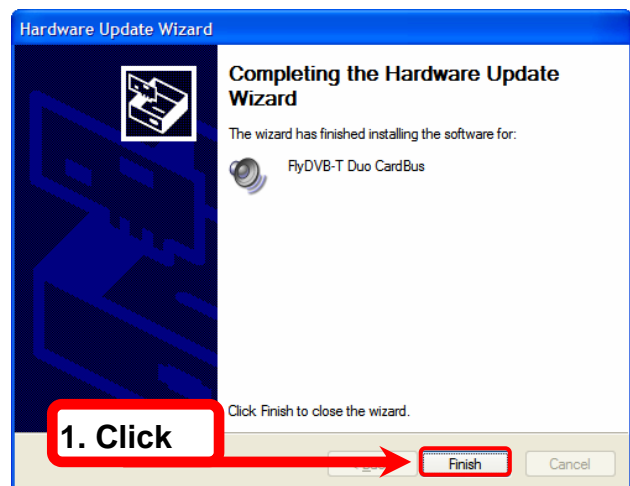
6. Click on **Next** and the drivers will install.



7. The drivers will automatically install.



8. Click **Finish**.



The driver update is complete!